

BLOWERS

ISO 9001:2015

Accreditation



CB-006-MS

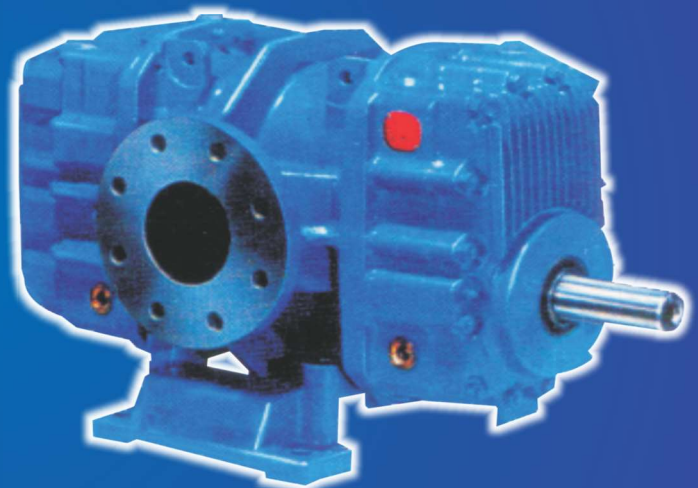
Beta

BLOWERS

ROTARY PISTON (ROOTS) TYPE

An ISO 9001:2015 Certified Company

**Twin Lobe Roots Blower, Tri Lobe Roots Blower, Vacuum Booster,
Aquaculture Blower, Silo Blower**



Designed to Perform & Built to Excel

OMM | BR | 02 | 01/13

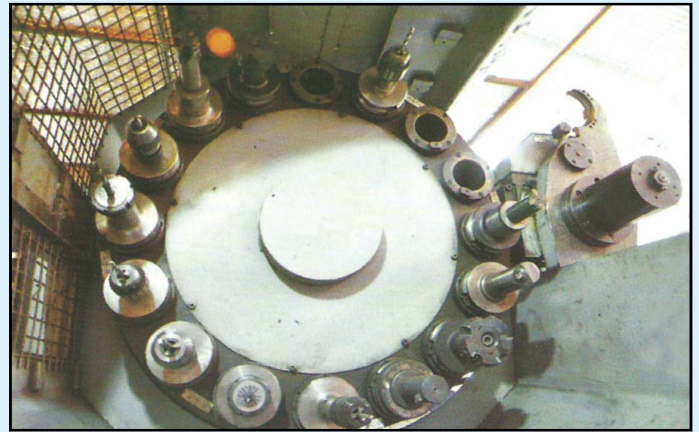
PROLOGUE

Beta Maschinenfabrik Pvt. Ltd. was established in 2004 and in a span of more than 15 years, it has become a pioneer in the field of manufacturing high-end industrial air blowers and Twin Lobe Rotary Air Blowers. Over the years, the company has expanded its technology base and has brought extensive products. We are an **ISO 9001:2015 certified company**. We have extensive all-round facilities which include in-house RSP design, production, manufacturing, quality control, inspection and after sales service.

Beta has a complete marketing infrastructure and unwavering commitment of highly skilled/trained staffs. We provide in-depth technical clarifications prior procurement and after-sales support. A focus on innovative design and high quality machined parts has earned Beta a reputation for excellence amongst its user. Our commitment is to make customer delighted through manufacturing most efficient and high quality products with effective services within stipulated time to achieve customers' utmost satisfaction.

PRODUCT RANGES AND MANUFACTURING TECHNOLOGY

At Beta blower, we believe that persistency in improvement in all spheres is the key to maintain a successful position in the aggressive competition of today's market. We have refined our air blowers to cater for standard air or natural gas applications as well as blowers used for handling hazardous and explosive gases. We also offer a wide range of twin lobe blowers and tri lobe blowers that cater to these industrial processes. Beta Blower is manufacturing quality blowers at competitive price that is the most desirable tool to sustain in highly competitive era. Our blower designs are generated through elaborate research and development on CAD/CAM software to lend precision to every product line. Being an ISO 9001:2015 certified quality producer, we endeavour to maintain its competitiveness, efficiency and energy saving factors at all cost.



NOTICEABLE DIFFERENCES - MARKETING AND AFTER SALES SUPPORT

We are aware that getting a customer is easy but retaining the customer is a difficult task and hence we ensure complete customer satisfaction by going an extra mile to attain the customer delight. Our guarantee services and after sales services are to be experienced to believe and majority of our esteemed customers vouch the same. Our wide chain of marketing office stretch across the country in business centres like Delhi, Mumbai, Ahmedabad, Chennai, Jaipur, Bangalore, Kolkata, Jamshedpur and Durg. Our dealers/partners are equipped to recommend the appropriate requirements of air blower to the customers and deliver the same at your door step.

APPLICABILITY OF OUR PRODUCTS

Beta rotary piston blowers are precision machines, designed and manufactured for the use in different field of applications, such as Petrochemicals, Fertilizers, Cements, Steels, etc.

It is also used in negative or positive pressure conveying of materials in bulk carrying vehicles, gas transportation equipment, Pressurize aeration, digesting, gas supply of an effluent and sewage treatment plants. Some of the other utilities of our blowers include, Filter cleaning, backwashing and aeration blowers in water works, specially ordered/made High vacuum pumping station and Rotary drum or belt filters used for Toxic, Aggressive and Hazardous industrial gases.



Some of our models/blowers are used in Power Plants (Gas or Steam based) Nuclear power plants and they are in compliance with standards and norms of competent authorities.

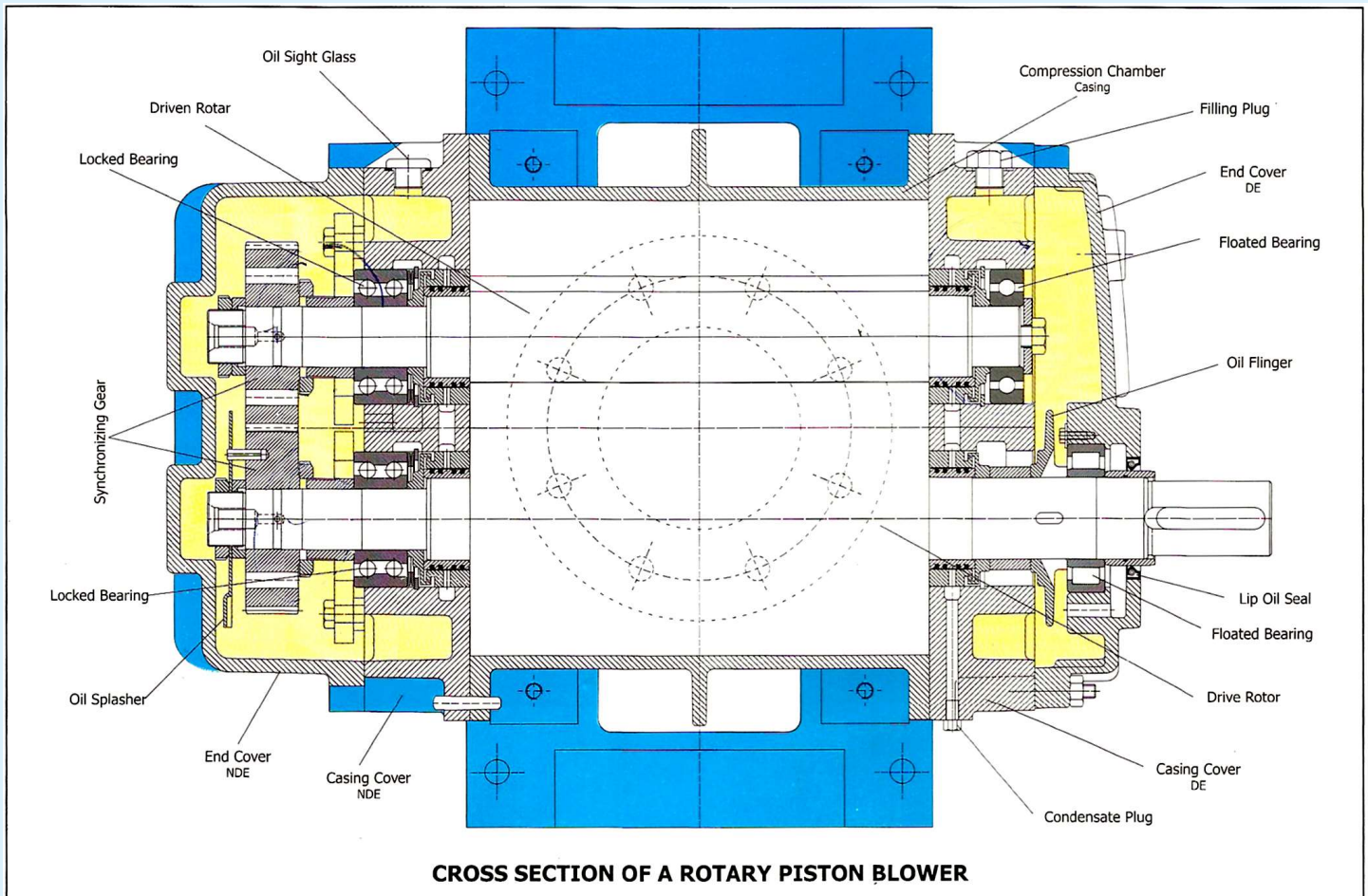
TECHNICAL DETAILS

STANDARDS

Beta blowers confirm to the relevant parts of API STANDARD-619 (2nd EDITION MAST 1985 REAFFIRMED, MAY 1991) the international standards for refinery services, however, it can be supplied in compliance with other National or International Standards.

TESTS

Normally Beta blowers are tested in accordance with BS-1571 Part - II but can be tested in accordance with ASME PTC-9 or DIN-1945 depending on customers requirements.



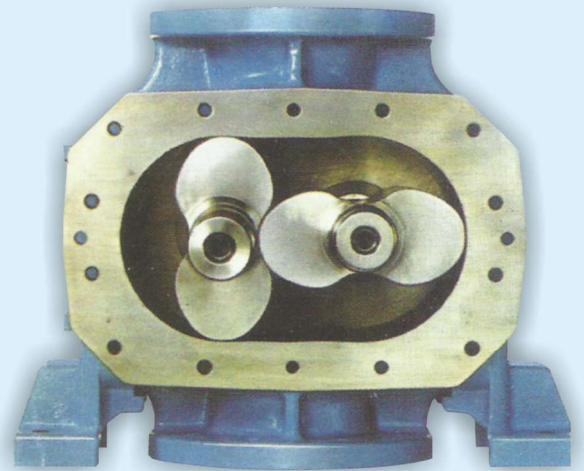
DRIVERS

Direct Drivers - Beta blowers can be driven by Electric motors, Air motors, Hydraulic motors, IC engines, Gas or Steam Turbines or can directly be coupled with a gear train.

Indirect Drivers - Beta blowers can be flexible connected to an electric motor (max. belt speed 30 m/sec) at maximum power condition. Beta blowers can be driven by an IC engine with loading by an electromagnetic clutch.

ADVANTAGES OF BETA BLOWERS

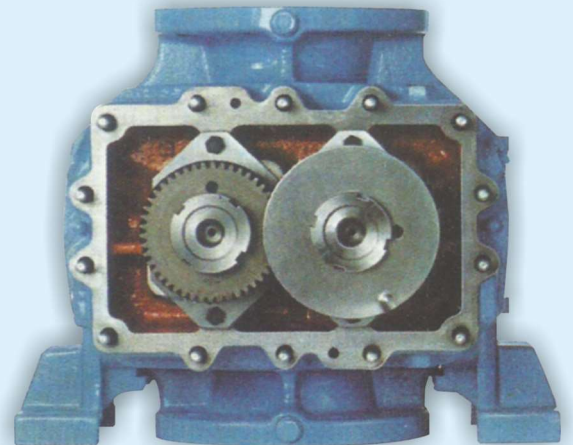
- High Mechanical Efficiency.
- High Volumetric Efficiency.
- High Safety and Reliability of Operation.
- Efficient Design and Construction.
- Higher flow capacity due to Synchronized Timing Gears.
- Super silent blowers with option of acoustic enclosure to reduce the noise level.
- Rigid mountings with vibration dampers.
- Stronger Shafts with Wear Liner Sleeve on Shaft.
- Lubrication at both ends.
- Exclusive left hand drive blowers.
- Special Oil sealing arrangements.



View of rotor arrangement inside the casing

ACHIEVEMENTS

We have over 1600 valued customers across India and several International clients at Indonesia, Nigeria, Dubai, Sultanate of Oman, Bangladesh and Sri Lanka. Some of the biggest blower manufactured and supplied by us are of 7,000 m³/hour with a discharge pressure of 0.8 kg/cm² (Model no. 26.19) supplied to Uttar Pradesh Jal Nigam and 11,000 m³/hour with a discharge pressure of 0.8 kg/cm² (Model no. 27.22) supplied to M/s Hindustan Organic Chemicals Ltd., Maharashtra.

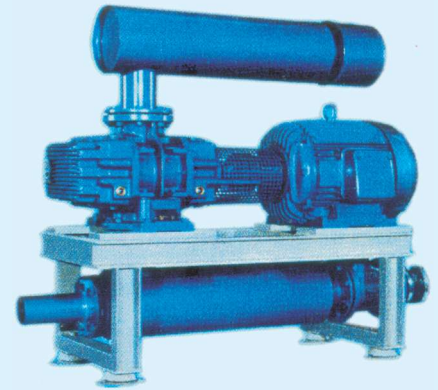


View of Synchronizing Gear



INDUSTRIES/SEGMENTS USING OUR BLOWERS

- Pulp & paper
- Steel
- Sugar
- Pharmaceuticals
- Automobile
- Agro & Food Industries
- Textile
- Hospitals
- Chemical & Fertilizer
- Cement
- Milk & Dairy
- Hotels/Resorts/Shopping Malls
- Govt. & PSU
- Footwear
- Energy & Power
- WTP, STP, ETP Manufacturer and Real Estate & Commercial Developers



A direct drive arrangement

WHAT CUSTOMERS SAYS...

"We have installed Beta Blowers of different capacities at the sites of our esteemed clients like BAXTER INDIA PVT. LTD., GUETERMAN INDIA PVT. LTD., RELAXO FOOTWEAR, PRATIBHA SYNTEX LTD., KR PULP & PAPER, ANJANI STEEL, CADBURY INDIA LTD., HOTEL RADISSON etc. and all the blowers are working satisfactory since last 10 years." - **Hyper Filtration Pvt. Ltd. (Ghaziabad, U.P.)**.

"We are continuously using Beta Blowers for various applications at the sites of our esteemed clients like U.P. STATE INDUSTRIAL DEVELOPMENT CORPORATION (UPSIDC), HONDA SIEL CAR (I) LTD., HOTEL MAHINDRA LTD. etc. from the year 2005. The blowers manufactured & supplied by te Beta Maschinefabrik Pvt. Ltd. are most efficient and high quality on very economical price-tag. The quality producing by Beta Blowers is excellent & we are also very much satisfied with one of the best after sales support providing by beta support team." - **Sophisticated Industrial Materials Analytic (SIMA) Labs. Pvt. Ltd. (New Delhi)**.

"We have installed several Blowers at our different sites (viz. Tihar Jail, LNFP Orthopedic Block, NDDDB Channaraypatnam, PHE Jogonalpur by **M/s Beta Maschinefabrik Pvt. Ltd.** since 2004 and all of them are working satisfactorily". - **Enviro Engineers, New Delhi**.

"We are satisfied with your Creator tails and giving you purchase orders for design. Supply, Installations and Commissioning of Roots Blowers with its accessories" - **HOCL Raigad and BARC (GoI)**.

Our Esteemed Clients are :

- * Uttarakhand Jal Sansthan
- * BHEL, ONGC, NTPC, SAIL, Jindal Group, UEM India Ltd.
- * UP Jal Nigam
- * Punjab Water Supply and Sewerage Board
- * Haryana Public Health En. Dept.
- * Department of Local Bodies : UP, Rajasthan, Haryana, M.P., Gujarat, UPSIDC, UPJN



Intake flow volume "Q1" and power consumption at the blower shaft "P" depending on speed "N" and differential pressure "Δ P" (mbar)

MODEL	ΔP mbar	100		200		300		400		500		600		700		800		900		1000		
		SPEED /MIN	Q1 m³/hr.	P kw	Q1 m³/hr.	P kw	Q1 m³/hr.	P kw	Q1 m³/hr.	P kw	Q1 m³/hr.	P kw	Q1 m³/hr.	P kw	Q1 m³/hr.	P kw	Q1 m³/hr.	P kw	Q1 m³/hr.	P kw	Q1 m³/hr.	P kw
BR-20.00	1200	47	0.29	38	0.50	30	0.70	24	0.90	18	1.11	13	1.31									
	1500	65	0.37	56	0.62	48	0.87	42	1.13	36	1.38	31	1.64									
	1800	83	0.44	73	0.74	66	1.05	59	1.35	54	1.66	49	1.96									
	2200	107	0.54	97	0.91	90	1.28	83	1.65	78	2.03	72	2.40									
	2600	131	0.62	121	1.05	113	1.48	107	1.91	101	2.34	96	2.77									
BR-20.01	1200	66	0.36	50	0.64	37	0.91	27	1.19	18	1.46	9	1.74									
	1500	96	0.45	76	0.79	64	1.14	53	1.48	44	1.83	36	2.17									
	1800	119	0.54	103	0.95	90	1.37	80	1.78	70	2.19	62	2.61									
	2200	154	0.66	138	1.17	125	1.67	115	2.18	106	2.68	97	3.19									
	2400	172	0.75	155	1.34	143	1.92	132	2.51	123	3.09	115	3.68									
BR-20.02	1200	101	0.50	81	0.91	66	1.33	52	1.74	41	2.16	30	2.57									
	1500	139	0.62	119	1.14	103	1.66	90	2.18	78	2.70	68	3.21									
	1800	177	0.75	156	1.37	141	1.99	128	2.61	116	3.23	106	3.86									
	2200	227	0.91	206	1.67	191	2.43	178	3.19	166	3.95	156	4.71									
	2300	239	0.96	219	1.76	203	2.56	190	3.36	179	4.16	168	4.97									
BR-21.03	1200	109	0.60	93	1.01	80	1.43	70	1.84	61	2.25	52	2.67	44	3.08	37	3.50	31	3.91	24	4.32	
	1500	146	0.75	130	1.26	118	1.78	107	2.30	98	2.82	89	3.34	82	3.85	74	4.37	68	4.89	61	5.41	
	1800	183	0.90	167	1.52	155	2.14	144	2.76	135	3.38	126	4.00	119	4.62	111	5.24	105	5.87	98	6.49	
	2200	233	1.10	217	1.85	204	2.61	194	3.37	184	4.13	176	4.89	168	5.65	161	6.41	154	7.17	148	7.93	
	2600	282	1.29	266	2.18	254	3.08	243	3.97	234	4.86	225	5.76	218	6.65	210	7.54	204	8.44	197	9.33	
BR-21.04	1200	152	0.74	130	1.30	112	1.86	98	2.42	85	2.98	73	3.54	62	4.10	52	4.66					
	1500	204	0.92	182	1.62	164	2.32	150	3.02	137	3.72	125	4.42	114	5.12	104	5.83					
	1800	256	1.11	234	1.95	216	2.79	201	3.63	188	4.47	177	5.31	166	6.15	156	6.99					
	2200	325	1.36	303	2.38	285	3.41	271	4.44	258	5.46	246	6.49	235	7.52	225	8.54					
	2500	377	1.57	355	2.77	337	3.97	322	5.17	309	6.37	298	7.57	287	8.77	277	9.97					
BR-21.05	1200	234	1.01	204	1.84	182	2.66	163	3.49	146	4.32	130	5.15									
	1500	311	1.26	281	2.29	258	3.33	239	4.37	222	5.40	207	6.44									
	1800	387	1.51	357	2.75	335	4.00	316	5.24	298	6.48	283	7.72									
	2200	489	1.85	459	3.37	437	4.88	418	6.40	400	7.92	385	9.44									
	2350	527	2.01	498	3.68	475	5.34	456	7.00	439	8.67	423	10.33									
BR-22.06	1000	187	0.87	163	1.53	145	2.19	130	2.85	117	3.50	107	4.16	94	4.82	83	5.48	74	6.14	65	6.79	
	1250	248	1.09	224	1.91	206	2.74	191	3.56	178	4.38	166	5.20	155	6.03	144	6.85	134	7.67	125	8.49	
	1500	308	1.31	285	2.30	267	3.28	252	4.27	239	5.26	226	6.24	215	7.23	205	8.22	195	9.20	186	10.19	
	1800	381	1.57	358	2.75	330	3.94	325	5.12	311	6.31	299	7.49	288	8.68	278	9.86	268	11.05	259	12.23	
	2400	527	2.14	504	3.76	486	5.38	471	7.00	457	8.62	445	10.24	434	11.86	424	13.48	414	15.10	405	16.72	
BR-22.07	1000	274	1.31	247	2.26	226	3.20	208	4.14	193	5.08	178	6.02	165	6.97	153	7.91					
	1250	359	1.64	332	2.82	311	4.00	293	5.18	278	6.35	263	7.53	251	8.71	238	9.89					
	1500	445	1.97	417	3.39	396	4.80	378	6.21	363	7.62	349	9.04	336	10.45	323	11.86					
	1800	547	2.37	519	4.06	498	5.76	480	7.45	465	9.15	451	10.84	438	12.54	426	14.24					
	2300	717	3.03	689	5.21	668	7.38	651	9.56	635	11.73	621	13.90	608	16.08	596	18.25					
BR-22.08	1000	392	1.70	353	3.03	322	4.35	297	5.68	275	7.00											
	1250	514	2.12	474	3.78	444	5.44	419	7.10	397	8.76											
	1500	635	2.55	596	4.54	566	6.53	540	8.52	518	10.51											
	1800	781	3.06	742	5.45	711	7.83	686	10.22	664	12.61											
	2200	976	3.79	936	6.76	906	9.73	881	12.71	859	15.68											
BR-23.09	1000	394	1.65	354	2.96	324	4.27	299	5.57	277	6.88	256	8.18	238	9.49	220	10.79	204	12.10	189	13.40	
	1250	516	2.07	477	3.70	446	5.33	421	6.96	399	8.59	378	10.23	360	11.86	342	13.49	326	15.12	311	16.75	
	1500	638	2.48	599	4.44	568	6.40	543	8.36	521	10.31	500	12.27	482	14.23	464	16.19	448	18.14	433	20.10	
	1800	785	2.98	745	5.33	715	7.68	690	10.03	668	12.38	647	14.73	629	17.08	611	19.42	595	21.77	580	24.12	
	2300	1029	3.93	990	7.05	959	10.17	934	13.29	912	16.41	891	19.54	873	22.66	855	25.78	839	28.90	824	32.02	
BR-23.10	1000	580	2.33	539	4.22	507	6.10	481	7.99	457	9.88	436	11.77	416	13.66	398	15.55					
	1250	750	2.91	709	5.27	677	7.63	651	9.99	627	12.35	606	14.71	586	17.07	568	19.43					
	1500	920	3.49	879	6.32	847	9.16	821	11.99	797	14.82	776	17.65	756	20.49	738	23.32					
	1800	1124	4.19	1083	7.59	1051	10.99	1025	14.39	1001	17.78	980	21.18	960	24.58	942	27.98					
	2200	1396	5.12	1355	9.27	1323	13.43	1297	17.58	1273	21.74	1252	25.89	1232	30.05	1214	34.20					
BR-23.11	1000	831	3.42	790	6.10	759	8.78	732	11.45	709	14.13	688	16.81									
	1250	1064	4.09	1023	7.44	991	10.78	964	14.13	941	17.48	921	20.82									
	1500	1296	4.76	1255	8.78	1224	12.79	1197	16.81	1174	20.82	1153	24.84									
	1800	1575	5.56	1534	10.38	1503	15.20	1476	20.02	1453	24.84	1432	29.66									
	2000	1761	5.91	1720	11.08	1689	16.24	1662	21.41	1638	26.57	1618	31.74									
BR-24.12	970	806	3.42	746	6.01	701	8.60	663	11.19	630	13.78	600	16.37	571	18.96	546	21.55	522	24.14	498	26.73	
	1250	1079	4.41	1020	7.75	975	11.09	937	14.43	904	17.76	873	21.10	845	24.44	820	27.78	795	31.11	772	34.45	
	1460	1284	5.16	1225	9.05	1180	12.95	1142	16.85	1109	20.75	1078	24.65	1050	28.54	1025	32.44	1000	36.44	977	40.24	
	1750	1568	6.18	1508	10.85	1463	15.52	1425	20.20	1392	24.87	1362	29.54	1333	34.21	1308	38.89	1283	43.56	1260	48.23	
	2000	1812	7.15	1752	12.57	1707	18.00	1669	23.42	1636	28.85	1606	34.28	1577	39.70	1552	45.13	1528	50.55	1504	55.98	
BR-24.13	970	1090	4.41	1025	7.92	975	11.42	934	14.93	896	18.43	863	21.94	832	25.45	802	28.95					
	1250	1450	5.68	1385	10.20	1335	14.72	1294	19.24	1256	23.75	1223	28.27	1192	32.79	1162	37.31					
	1460	1721	6.64	1655	11.92	1605	17.19	1564	22.47	1526	27.75	1493	33.02	1462	38.30	1432	43.58					

Intake flow volume "Q1" and power consumption at the blower shaft "P" depending on speed "N" and differential pressure "Δ P" (mbar)

MODEL	ΔP mbar	100		200		300		400		500		600		700		800		900		1000		
		SPEED I/MIN	Q1 m³/hr.	P kw	Q1 m³/hr.	P kw	Q1 m³/hr.	P kw	Q1 m³/hr.	P kw	Q1 m³/hr.	P kw	Q1 m³/hr.	P kw	Q1 m³/hr.	P kw	Q1 m³/hr.	P kw	Q1 m³/hr.	P kw	Q1 m³/hr.	P kw
BR-24.14	970	1528	5.88	1440	10.85	1374	15.82	1316	20.79	1266	25.76	1221	30.73									
	1250	2031	7.57	1943	13.98	1877	20.39	1819	26.79	1769	33.20	1724	39.60									
	1460	2408	8.84	2320	16.33	2254	23.81	2196	31.29	2146	38.78	2101	46.26									
	1750	2929	10.60	2841	19.57	2775	28.54	2717	37.51	2667	46.48	2622	55.45									
BR-25.15	980	1551	7.23	1473	12.27	1414	17.31	1364	22.34	1320	27.38	1281	32.42	1244	37.45	1210	42.49	1178	47.53	1148	52.57	
	1250	2029	9.22	1951	15.65	1892	22.07	1843	28.50	1799	34.92	1760	41.35	1722	47.77	1689	54.20	1657	60.62	1627	67.05	
	1470	2419	10.85	2341	18.40	2282	25.96	2233	33.51	2188	41.07	2149	46.63	2112	56.18	2079	63.74	2047	71.00	2017	78.85	
	1550	2561	11.10	2483	18.73	2424	26.35	2374	33.98	2330	41.61	2291	49.24	2254	56.87	2220	64.49	2188	72.12	2158	79.75	
1750	2915	12.91	2837	21.91	2778	30.90	2729	39.90	2685	48.89	2646	57.89	2608	66.88	2575	75.88	2543	84.87	2513	93.87		
BR-25.16	980	2121	8.97	2017	15.75	1937	22.53	1870	29.31	1811	36.09	1758	42.87	1707	49.65	1661	56.43					
	1250	2775	11.44	2674	20.09	2591	28.74	2523	37.38	2465	46.03	2412	54.68	2361	63.32	2315	71.97					
	1470	3308	13.46	3204	23.63	3124	33.80	3056	43.96	2998	54.13	2945	64.30	2894	74.47	2848	84.64					
	1750	3986	16.02	3882	28.13	3802	40.23	3734	52.34	3676	64.44	3623	76.55	3572	88.65	3526	100.76					
BR-25.17	980	3080	12.04	2914	21.89	2786	31.73	2679	41.58	2587	51.53	2502	61.27									
	1250	4039	15.36	3872	27.92	3744	40.48	3638	53.04	3545	65.60	3460	78.16									
	1350	4394	16.33	4227	29.63	4099	42.94	3993	56.25	3900	69.55	3815	82.86									
	1470	4819	18.06	4653	32.83	4525	47.60	4418	62.37	4326	77.14	4241	91.91									
1750	5813	21.50	5646	39.08	5519	56.67	5412	74.25	5320	91.84	5235	109.42										
BR-26.18	730	2252	9.91	2122	17.26	2020	24.61	1939	31.96	1865	39.31	1795	46.66	1735	54.01	1679	61.35	1623	68.70	1574	76.05	
	985	3148	13.37	3018	23.29	2916	33.21	2835	43.12	2761	53.04	2691	62.95	2631	72.87	2575	82.79	2519	92.70	2470	102.62	
	1250	4079	16.97	3949	29.56	3847	42.14	3766	54.72	3692	67.31	3622	79.89	3562	92.47	3506	105.06	3450	117.64	3401	130.23	
	1480	4886	20.09	4757	34.99	4655	49.89	4574	64.79	4500	79.69	4430	94.59	4370	109.49	4314	124.39	4258	139.29	4208	154.19	
BR-26.19	730	3472	13.59	3295	24.61	3156	35.63	3044	46.66	2942	57.68	2846	68.70	2766	79.73	2658	90.75					
	985	4836	18.33	4659	33.21	4520	48.08	4408	62.95	4306	77.83	4210	92.70	4130	107.58	4049	122.45					
	1250	6253	23.26	6077	42.14	5938	61.02	5825	79.89	5742	98.77	5627	117.64	5547	136.52	5467	155.39					
	1480	7484	27.54	7307	49.89	7168	72.24	7056	94.59	6954	116.94	6858	139.29	6777	161.64	6697	183.99					
BR-26.20	730	4094	15.69	3858	28.82	3673	41.95	3526	55.07	3362	68.20	3264	81.33									
	985	5723	21.17	5487	38.88	5301	56.60	5154	74.31	5020	92.02	4893	109.74									
	1250	7415	26.87	7179	49.35	6994	71.82	6847	94.30	6713	116.78	6585	139.26									
	1480	8885	31.81	8648	58.43	8463	85.04	8316	111.66	8182	138.27	8054	164.89									
BR-27.21	740	5381	18.18	5122	33.77	4927	49.35	4756	64.94	4610	80.53	4472	96.11	4351	111.70	4237	127.28	4131	142.87	4034	158.45	
	990	7411	24.33	7151	45.18	6956	66.03	6786	86.88	6640	107.73	6502	128.58	6380	149.43	6266	170.28	6161	191.13	6063	211.99	
	1235	9399	30.35	9140	56.36	8945	82.37	8774	108.38	8628	134.39	8490	160.40	8368	186.41	8255	212.42	8149	238.44	8052	264.45	
	1485	11429	36.49	11169	67.77	10974	99.04	10804	130.32	10657	161.60	10519	192.87	10398	224.15	10284	255.43	10179	286.70	10081	317.98	
BR-27.22	740	7281	37.25	6966	58.27	6727	79.29	6531	100.30	6347	121.32	6184	142.34	6042	163.35	5901	184.37					
	990	9998	49.84	9683	77.96	9444	106.07	9248	134.19	9064	162.31	8900	190.42	8759	218.54	8618	246.66					
	1235	12661	62.17	12345	97.25	12106	132.32	11911	167.40	11726	202.47	11563	237.55	11422	272.62	11280	307.70					
	1485	15378	74.76	15062	116.93	14823	159.11	14628	201.28	14443	243.46	14280	285.63	14139	327.81	13997	369.98					
BR-27.23	740	9542	39.74	9111	68.43	8767	97.13	8480	125.82	8222	154.52	7992	183.21									
	990	13129	53.16	12698	91.55	12354	129.94	12067	168.33	11809	206.72	11579	245.11									
	1235	16644	66.32	16214	114.21	15869	162.10	15582	209.99	15324	257.88	15094	305.77									
	1485	20231	79.74	19801	137.33	19456	194.91	19169	252.50	18911	310.08	18681	367.67									
BR-28.24	500	6538	28.97	6166	48.77	5868	68.57	5630	88.37	5406	108.16	5213	127.96	5034	147.76	4870	167.36					
	780	10708	45.19	10366	76.08	10038	106.96	9800	137.85	9576	168.74	9383	199.62	9204	230.51	9040	261.40					
	970	13538	56.20	13166	94.61	12868	133.02	12629	171.43	12406	209.84	12212	248.25	12034	286.66	11870	325.07					
BR-28.25	500	10122	39.85	9575	70.24	9187	100.64	8845	131.03	8526	161.43											
	780	16505	62.16	15958	109.58	15570	156.99	15228	204.41	14909	251.83											
	970	20836	77.30	20289	136.27	19901	195.24	19560	254.20	19240	313.17											
BR-29.26	430	12029	47.66	11500	83.61	11065	119.57	10692	155.52	10381	191.47	10102	227.42	9853	263.38	9604	299.33	9387	335.28	9169	371.23	
	640	18556	70.94	18027	124.45	17592	177.96	17219	231.47	16908	234.98	16629	338.49	16380	392.00	16131	445.51	15914	499.02	15696	552.53	
	770	22596	85.35	22068	149.73	21633	214.11	21260	278.49	20949	342.87	20669	407.25	20421	471.63	20172	536.01	19954	600.39	19737	664.77	
BR-29.27	490	15981	62.85	15281	110.84	14745	157.22	14292	204.40	13880	251.59											
	640	24630	93.55	23930	163.78	23395	234.00	22942	304.23	22530	374.45											
	770	29985	112.55	29285	197.04	28749	281.53	28296	366.02	27884	450.51											

● The Models under shaded portion are of water cooled type.

The Speed indicated in the Tables are Indicative only, and can be changed; Depending upon the differential Pressure and or Shaft Power - P

ALLOWANCES FOR PRIME MOVER OVER SHAFT POWER - P

Information Required to Make an Offer

We make every effort to offer our customer the type and size of the blower i.e. best suited for their specific requirement/application. However, following information should be provided to us along with the enquiry to enable us to provide most the desired Beta blower :

- a) Type and character of the medium to be conveyed. (For gases following data should be supplied with the enquiry; specific density (gas constant-R), specific heat C_p (specific ratio $x = C_p/C_v$), gas analysis (in % of weight or volume).
- b) Condition of the medium to be conveyed-including details of impurities, whether neutral or corrosive, saturated or dry.
- c) Required capacity (referred to intake condition) in cum/hr or kg/hr.
- d) Intake condition: absolute intake pressure in (bar), intake temperature- t_1 (C) ambient temperature (t_u) ambient pressure (P_1), area classification: specially for hazard, corrosive, saline, stormy, dusty or electrical hazards.
- e) Pressure differential P mbar or absolute discharge pressure P_e (bar). Operating condition (fluctuating load or continues load), maximum expected load.

For Details, contact nearest distributor or write to us

Designed, Manufactured and Marketed by :

Beta Maschinenfabrik (P) Ltd.

B-16, Sector-81, Phase-II, NOIDA-201 305, G.B. Nagar (U.P.) INDIA

Mobile : +91 8826995792, 8860005727, 9873725723, 9555464777

E-mail : info@betablowers.in; sales@betablowers.in; support@betablowers.in

Web : www.betablowers.in

